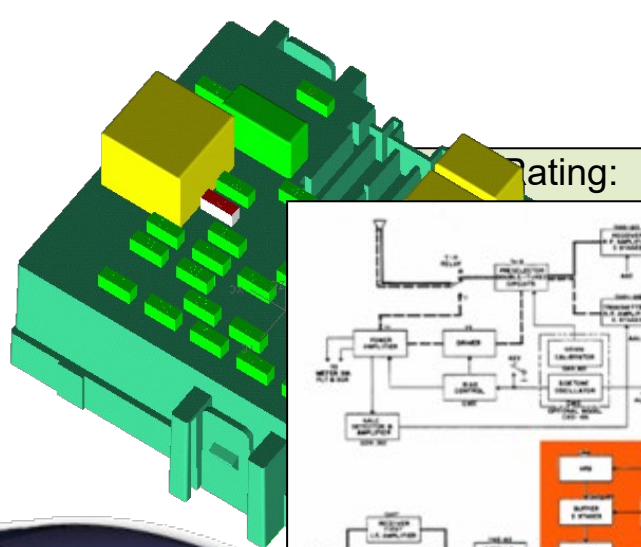


INCOSE Integrated MBSE Vision

What does the integrated digital thread look like...



Hydraulic Fluid:
SAE 1340 not-compliant

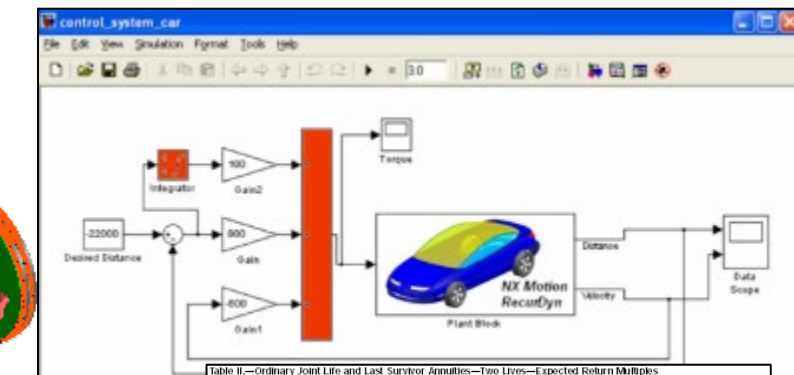
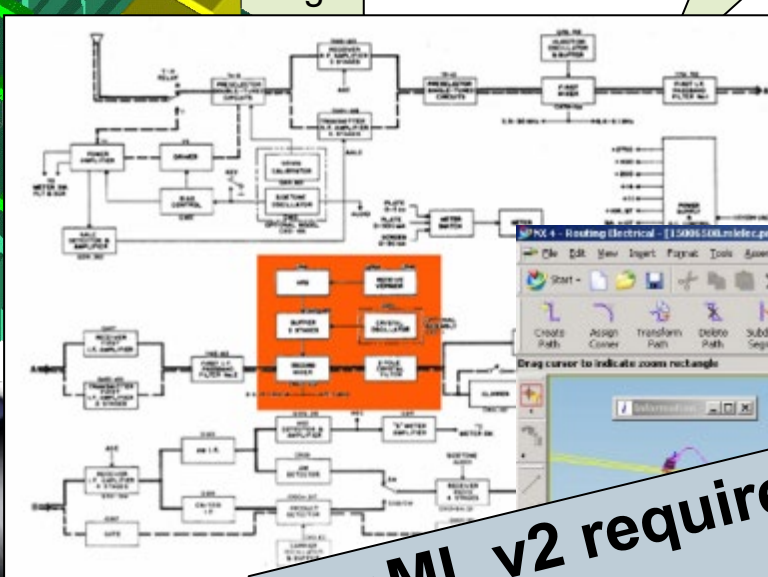


Table II—Ordinary Joint Life and Last Survivor Annuities—Two Lives—Expected Return Multiples

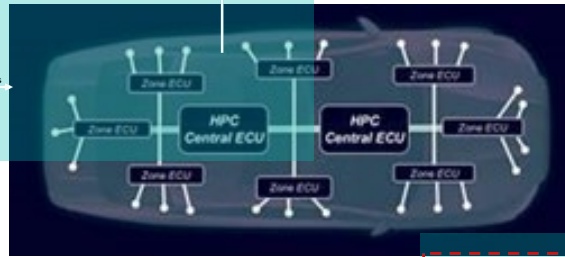
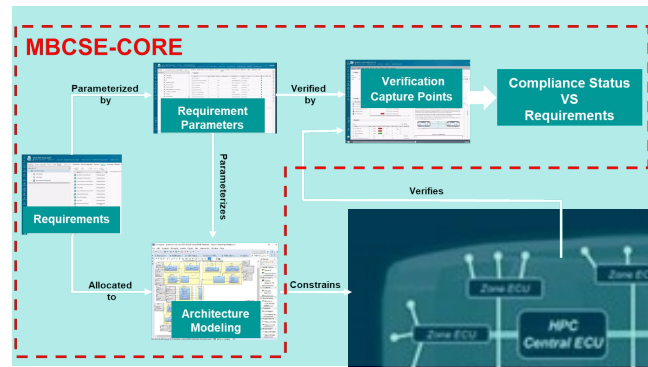
Ages		35	36	37	38	39	40	41	42	43	44	45	46	47
Male	Female	40	41	42	43	44	45	46	47	48	49	50	51	52
35	40	46.2	45.7	45.3	44.8	44.4	44.0	43.6	43.3	43.0	42.6	42.3	42.0	41.8
36	41	45.7	45.2	44.8	44.3	43.9	43.5	43.1	42.7	42.3	42.0	41.7	41.4	41.1
37	42	45.3	44.8	44.3	43.8	43.4	42.9	42.5	42.1	41.8	41.4	41.1	40.7	40.4
38	43	44.8	44.3	43.8	43.3	42.9	42.4	42.0	41.6	41.2	40.8	40.5	40.1	39.8
39	44	44.4	43.9	43.4	42.9	42.4	41.9	41.5	41.0	40.6	40.2	39.9	39.5	39.2
40	45	44.0	43.5	42.9	42.4	41.9	41.4	41.0	40.5	40.1	39.7	39.3	38.9	38.6
41	46	43.6	43.1	42.5	42.0	41.5	41.0	40.5	40.0	39.6	39.2	38.8	38.4	38.0
42	47	43.3	42.7	42.1	41.6	41.0	40.5	40.0	39.6	39.1	38.7	38.2	37.8	37.5
43	48	43.0	42.3	41.8	41.2	40.6	40.1	39.6	39.1	38.6	38.2	37.7	37.3	36.9
44	49	42.6	42.0	41.4	40.8	40.2	39.7	39.2	38.7	38.2	37.7	37.2	36.8	36.4
45	50	42.3	41.7	41.1	40.5	39.9	39.3	38.8	38.2	37.7	37.2	36.8	36.3	35.9
46	51	42.0	41.4	40.7	40.1	39.5	38.9	38.4	37.8	37.3	36.8	36.3	35.9	35.4
47	52	41.8	41.1	40.4	39.8	39.2	38.6	38.0	37.5	36.9	36.4	35.9	35.4	35.0

SysML v2 required to get here

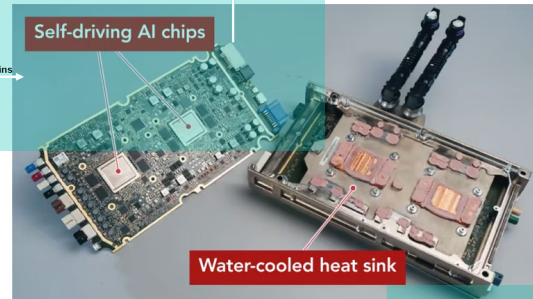
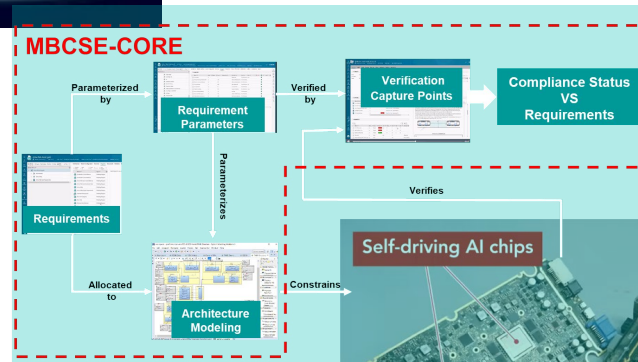
Minimum Turn Radius: 24 ft.
Automatic Dry Pavement Braking Distance at 60 MPH : ~~140~~. 90 ft



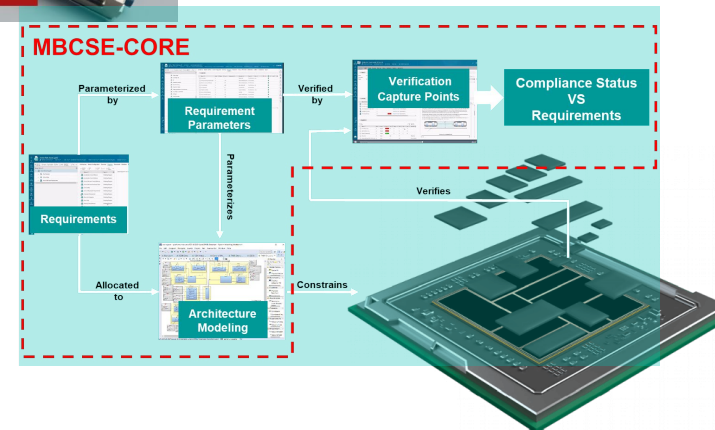
MBCSE Enables Threading of Verifiable Requirements



Platform Network



Compute Enclosure



3DIC / SoC

Reference SoCSS Model

Refined Requirements
Decomposed Functions
Analyzed Architectures
Threaded Design Verifications
Technical Baselines



Threaded Requirements
~~Requirements~~
~~Functions~~
~~Notional Architectures~~

Targeted Release Schedule - System Modeling

Rhapsody
 Cameo
 SMW
 SysML V2
 Capital

Fall 2023

Teamcenter 2312

Spring 2024

Teamcenter 2406

Fall 2024

Teamcenter 2412

Spring 2025

Teamcenter 2506

2023

2024

2025

Many tool / Multi-tool
 Common Information Model

Systems Modeler with IBM Rhapsody 2312

Rhapsody Integration 2312

Cameo Integration 2312

System Modeling Workbench 2312
 Capella 6.1

Architect Explorer 2312
 Capella 6.1 with MBCSE

Simcenter Studio V2 integration
 Studio 2210 and later, 2310 released

Systems Modeler with IBM Rhapsody 2406

Rhapsody Integration 2406

Cameo Integration 2406

System Modeling Workbench 2406
 Capella 7.0

Architect Explorer 2406
 Capella / SMW with MBCSE

Simcenter Studio
 Studio 2404

Teamcenter SysML V2 Integration 2406

SysML V2 Modeler GA1
 Joint development with IBM

Capital Software Developer with IBM Rhapsody 2402

Systems Modeler with IBM Rhapsody 2412

Rhapsody Integration 2412

Cameo Integration 2412

System Modeling Workbench 2412
 Capella 7.0

Architect Explorer 2412
 Capella / SMW with MBCSE

Simcenter Studio
 Studio 2410

Teamcenter SysML V2 Integration 2412

SysML V2 Modeler GA2
 Joint development with IBM

Capital Software Developer with IBM Rhapsody 2408

Systems Modeler with IBM Rhapsody 2506

Rhapsody Integration 2506

Cameo Integration 2506

System Modeling Workbench 2506
 Capella 7.1

Architect Explorer 2506
 ?? with MBCSE

Simcenter Studio
 Studio 2504

Teamcenter SysML V2 Integration 2506

SysML V2 Modeler GA3
 Joint development with IBM

Capital Software Developer with IBM Rhapsody 2502

SIEMENS

Want more details (Xpedition, NX, Capital, Xcelerator apps...)? We will be outside in the hall & the Strand during breaks for discussions...

Contact

Published by Siemens 2024

- Mike Crist

Presales Account Development Specialist
Aerospace, Defense, Federal and Marine

- Phone +1 (903) 209-8539
- E-mail Michael.crist@siemens.com

Disclaimer

© Siemens 2024

Subject to changes and errors. The information given in this document only contains general descriptions and/or performance features which may not always specifically reflect those described, or which may undergo modification in the course of further development of the products. The requested performance features are binding only when they are expressly agreed upon in the concluded contract.

All product designations may be trademarks or other rights of Siemens AG, its affiliated companies or other companies whose use by third parties for their own purposes could violate the rights of the respective owner.