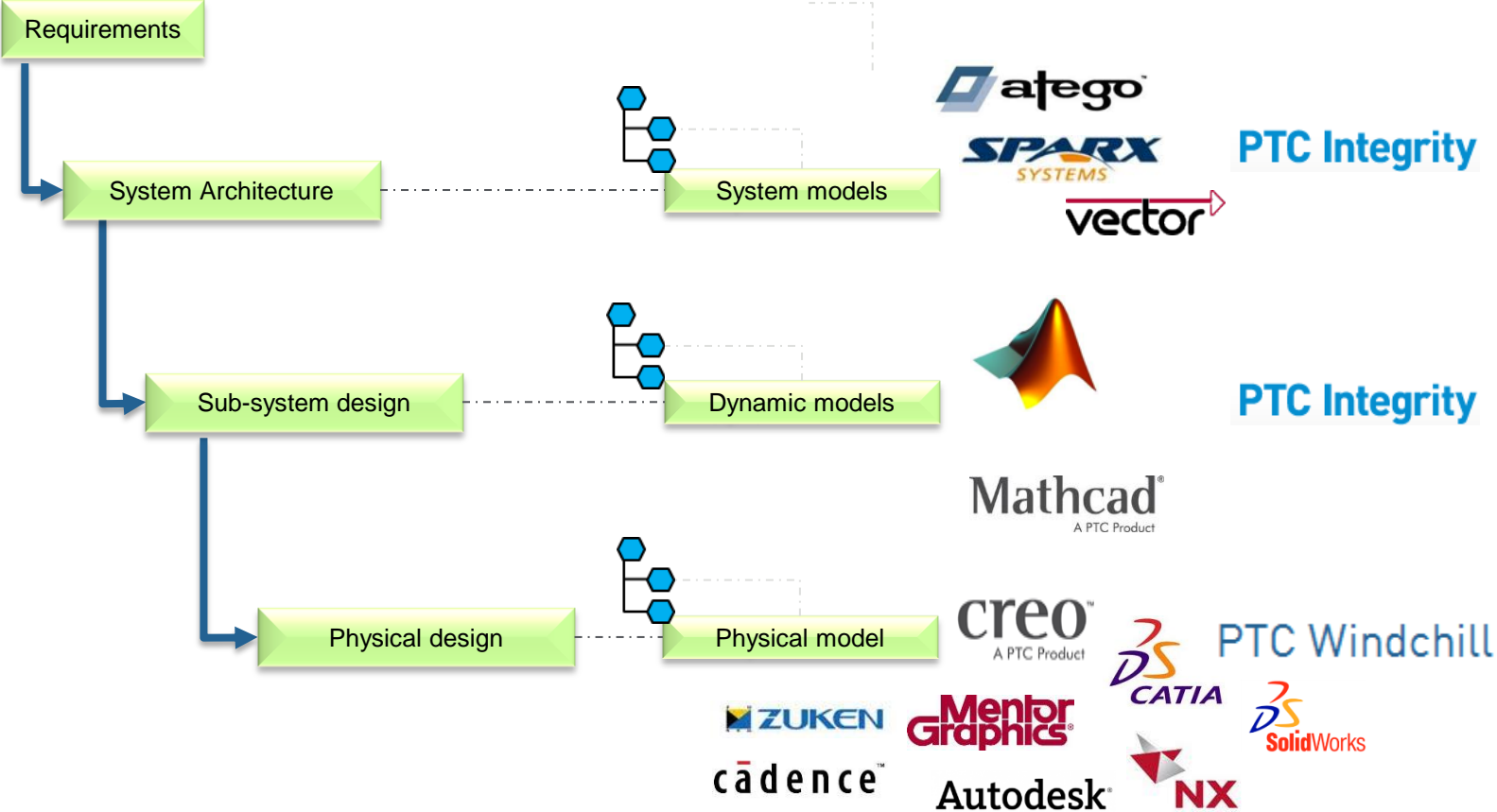


INCOSE IW 2014: Model Management

Derek Piette
Product Management Director

January, 2014





- **Supported applications:**
 - Artisan Studio, Sparx EX, PREEVision
- **Capabilities / Use Cases*:**
 - Configuration management for models
 - Change management across assets including models, requirements, and test cases
 - Capture surrogate representation of model elements
 - Requirements are synchronized into model and back to PTC Integrity
 - Full traceability among assets in PTC Integrity
 - Access controls & approval placed at package level
 - In-work information captured in separate SCM sandbox

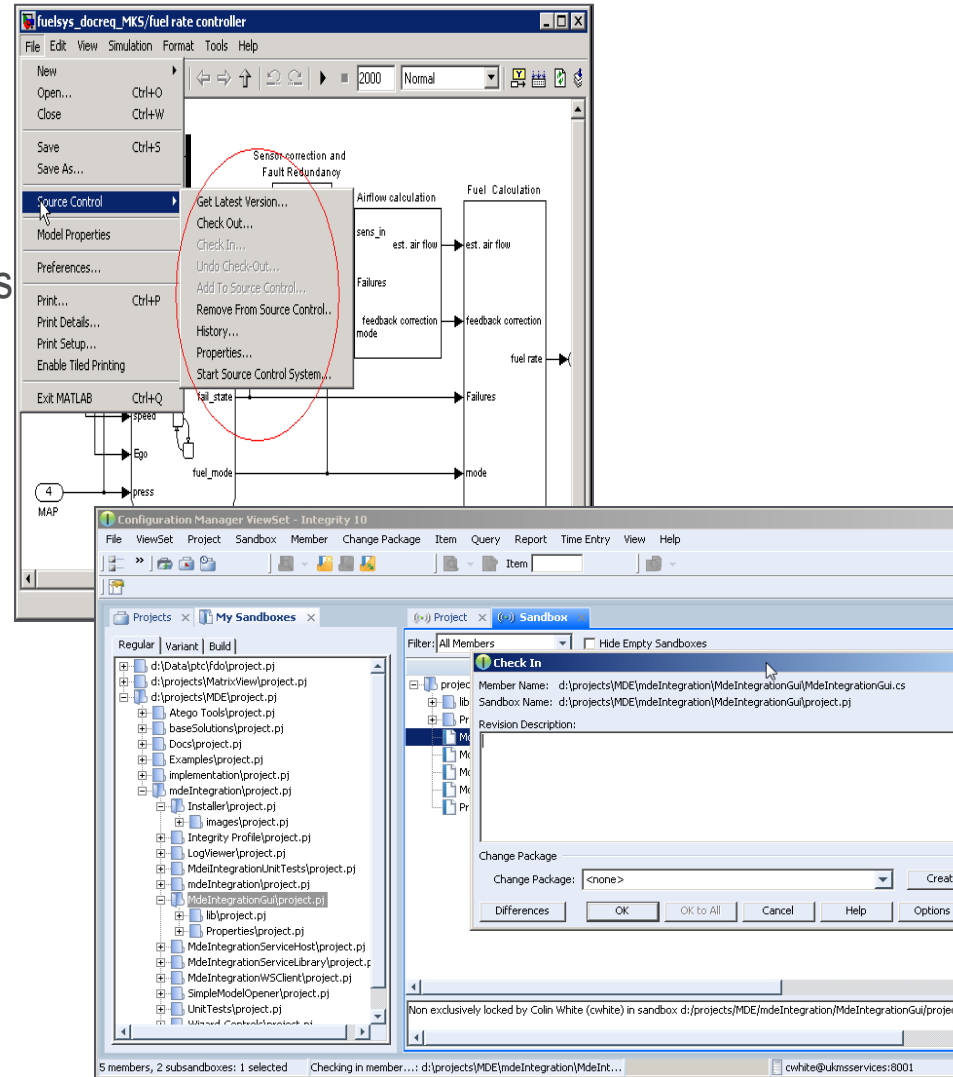
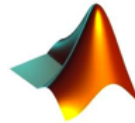
The screenshot displays the PTC Integrity software interface. On the left, a model diagram shows a hierarchy of nodes: a yellow oval '1.1' at the bottom, a red diamond '1.2' above it, another red diamond '1.3' above that, and a yellow oval '1.2.1.1' to the right of '1.3'. An arrow points from '1.2.1.1' to a yellow oval '1.3.1.1' at the top, which is part of a larger node 'Integration_941_0.1.0.'. The text 'Added by Integration' is visible between '1.3' and '1.2.1.1'. In the top right corner, logos for 'atego', 'SPARX SYSTEMS', and 'vector' are displayed. The main window shows a 'Change Package [941:2 (Closed)]' window with a table of entries:

Type	Member	Revision	Path
Update	Analysis_Function_ddd077a6_b0d0_11d4...	1.1.1.1	/WS4/Analysis/Function...
Update	ddd077a6_b0d0_11d4_8522_00609740770...	1.1.1.1	/WS4/Analysis/Function...
Update	Analysis_ddd077a2_b0d0_11d4_8522_006...	1.1.1.1	/WS4/Analysis/project...

Below this is a 'Package Document: HSUV Demo (1022)' window showing an 'Outline' tree with folders for '1 HSUVMode...', '2 Integrity C...', '3 Integrity P...', '4 ModelingD...', and '5 Profiles - P...'. A search filter 'where' is applied. A list of items is shown, with 'HSUVRequirements' highlighted. At the bottom, a 'Package: 1045' window shows metadata: 'Created by engineer on Apr 12, 2013 4:01:22 AM' and 'Modified by cbsecretary on Apr 12, 2013 9:49:41 AM'. A 'Model Element' button is visible. The bottom of the screen shows a 'Category' dropdown set to 'Package' and an 'External ID' field containing 'b9c962e6-ece2-4256-b953-b6391cb04cd4'.

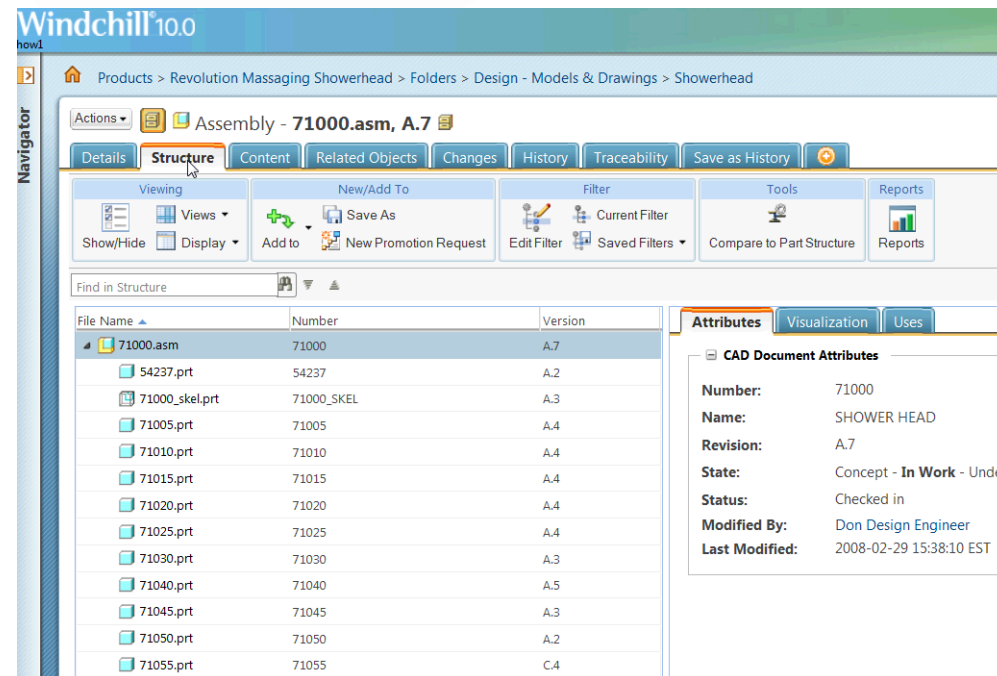
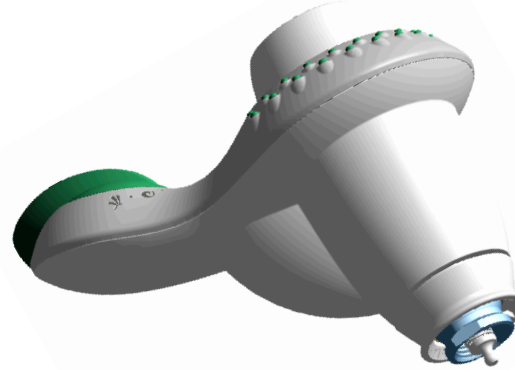
*Use case support varies by application

- Supported applications:
 - Matlab Simulink
- Capabilities / Use Cases*:
 - Configuration management for Simulink models
 - Change management across assets including models, requirements, and test cases
 - Input/output of simulations is captured and managed
 - Auto-generated code captured and linked to associated assets
 - Capture surrogate representation of model elements
 - Linked requirements are synchronized into Simulink
 - Full traceability among assets in PTC Integrity
 - Feedback delivered to Simulink when requirement changes



*Use case support varies by application

- Supported applications:
 - xCAD
- Capabilities / Use Cases*:
 - Structure products from parts defined in different CAD formats
 - Visualize product structures of data defined in different CAD formats
 - Manage parts defined by multiple CAD tools
 - Manage lightweight visualization models
 - Access controlled data
 - Share/collaborate content to external suppliers/OEMs
 - Capture full history
 - Configure variability from PLM or CAD tool
 - Manage multi-discipline design processes
 - Manage multiple, disparate design data directories
 - Local and server based repository/cache



PTC[®] **PRODUCT & SERVICE
ADVANTAGE[®]**